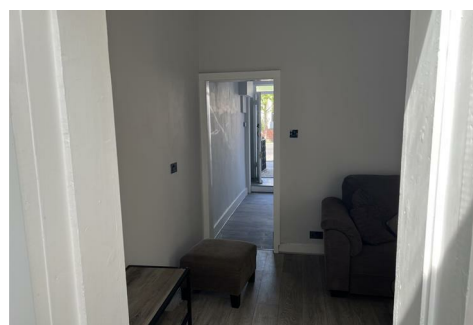


C JAMES & CO - TOOTING

SALES AND LETTINGS SPECIALISTS



7 Fountain Road, London, SW17 0HG

£2,600 Per month

Nestled on the charming Fountain Road in Tooting, this delightful mid-terrace house offers a perfect blend of comfort and convenience. Built in 1890, this three-bedroom family home spans an inviting 818 square feet, providing ample space for both relaxation and entertaining. It is offered furnished or unfurnished.

The well-proportioned bedrooms are ideal for families, offering a peaceful retreat at the end of a busy day. The property also features a well-appointed bathroom, ensuring that all your needs are met.

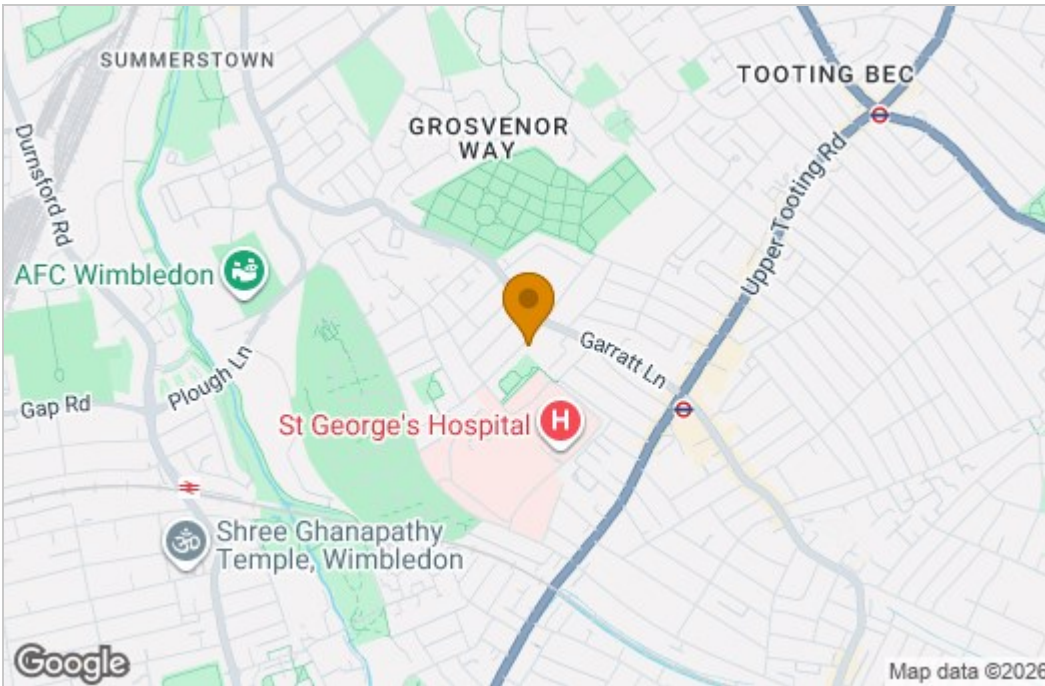
One of the standout features of this home is the lovely garden, which provides a private outdoor space for children to play or for hosting summer gatherings with friends and family.

Location is key, and this property does not disappoint. It is conveniently situated close to local amenities, making daily errands a breeze. Additionally, excellent transport links are nearby, ensuring easy access to the wider city and beyond. For those in need of medical services, St. George's Hospital is just around the corner, adding an extra layer of convenience.

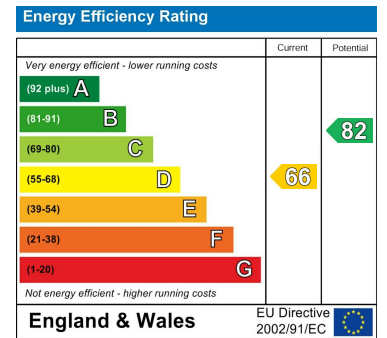
This charming home on Fountain Road is an excellent opportunity for families seeking a comfortable and well-located residence in Tooting.

Floor Plan

Area Map



Energy Efficiency Graph



These particulars, whilst believed to be accurate are set out as a general outline only for guidance and do not constitute any part of an offer or contract. Intending purchasers should not rely on them as statements of representation of fact, but must satisfy themselves by inspection or otherwise as to their accuracy. No person in this firm's employment has the authority to make or give any representation or warranty in respect of the property.